



THE MANAGEMENT PLAN IN PRACTICE

Case study

WP-EcoB07



Go further 5



COMMENTS

Key ideas

This slide provides the references of the WFD articles referring to the management plan. In fact, information is not very detailed: WFD provides a short description of the plan, a detailed list of contents (Annex VII) and a detailed schedule for the elaboration of the plan.

A major point here is the connection made by WFD with the requirement for participation. Though the elaboration of the plan itself is not a big deal as it is mainly a compilation of the outputs of the previous stages, the path to follow in order to fulfil with WFD requirements will reveal very demanding in practice as shown in slide 3/5.

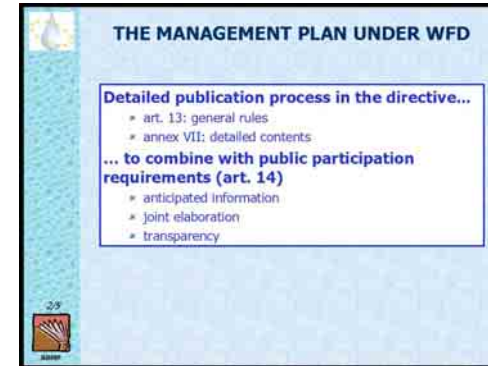
Note

For details about the contents of the management plan see Go further section.

Go further

This presentation does not provide details regarding the participation process. You can refer to the dedicated Guidance document:

http://forum.europa.eu.int/Public/irc/env/wfd/library?l=/framework_directive/guidance_documents/participation_guidance&vm=detailed&sb=Title



WP-EcoB07

2/5



YOUR NOTES

COMMENTS

Key ideas

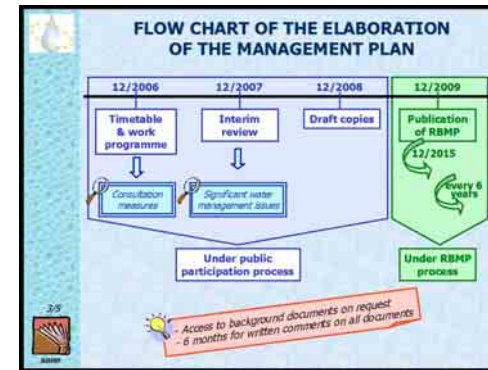
This slide provides a simplified flow chart of the elaboration of the management plan. Public participation is a continuous concern as it will have direct impact on the working methods:

- they will be more transparent, and working plan will integrate such constraints (e.g. deadlines for availability of drafts will come earlier than required in order to allow participation), etc.;
- genuine public participation, as required by WFD, is generally not very common nor usual. Efforts will be needed both on the practical point of view (e.g. in order to ensure easy access to information) and on the methodological point of view (e.g. need to set up and involve dedicated open working groups) thus.

Though participation is formally required only by 2006, it seems necessary to involve the public earlier. E.g. major water issues will be identified by 2004 (during the characterisation stage) and it seems necessary to ensure a common agreement of all interested parties on this statement, as it will lately be the basis of all measures and efforts. Therefore, it does not seem very realistic to involve the public at large in 2006 only; it seems preferable to do it from 2004, though this is not compulsory at that time.

It is also important to note that the participation process will have to be ensured lately when time will come to update the plan (every 6 years).

Go further



WP-EcoB07

3/5

4

YOUR NOTES

COMMENTS

Key ideas

This slide provides a synthetic list of the contents of a management plan. Broadly speaking, the plan is a collection of main outputs of the previous steps in order to provide an overview of the all process of analysis and of construction carried out over the years: what are the basic statements (issues at stake...)? what measures are planned? what is the impact of these measures? etc.

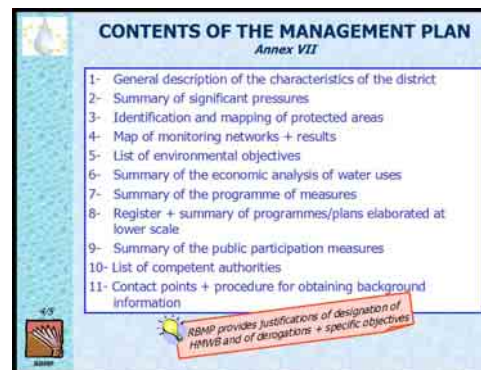
It is important to note that justifications of all non-compliance with the objective must be provided: HMWB, derogations. This will ensure transparency and will provide elements for the debate with stakeholders.

Once elaborated, the plan will play as a road-map on the way to the good ecological status: it connects statements and action, issues and measures, etc. It is essential that all parties involved endorse the plan and get involved in its implementation: it has to be a collective document.

Note

Full description of the contents as provided by Annex VII is available in the Go further section. Click on the frame to reach the relevant slide.

Go further



CONTENTS OF THE MANAGEMENT PLAN Annex VII	
1-	General description of the characteristics of the district
2-	Summary of significant pressures
3-	Identification and mapping of protected areas
4-	Map of monitoring networks + results
5-	List of environmental objectives
6-	Summary of the economic analysis of water uses
7-	Summary of the programme of measures
8-	Register + summary of programmes/plans elaborated at lower scale
9-	Summary of the public participation measures
10-	List of competent authorities
11-	Contact points + procedure for obtaining background information

WP-EcoB07

4/5



1

YOUR NOTES

COMMENTS

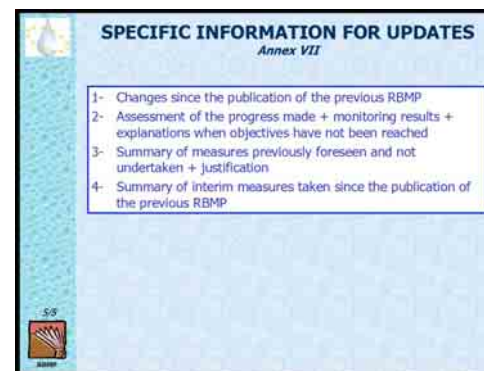
Key ideas

This slide only reminds the information needed when updating the plan, by 2015 and every 6 years afterwards.

An important point is that an assessment of the progress achieved is required: this makes a clear connection with the previous plan and it reminds that all the WFD process is cyclic; it is a continuum.

Therefore, from a formal point of view, much more than a simple update is needed.

Go further



WP-EcoB07

5/5

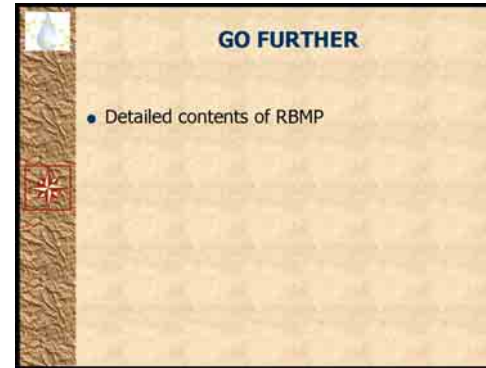


YOUR NOTES

COMMENTS

Key ideas

Go further section



WP-EcoB07
Go further 1

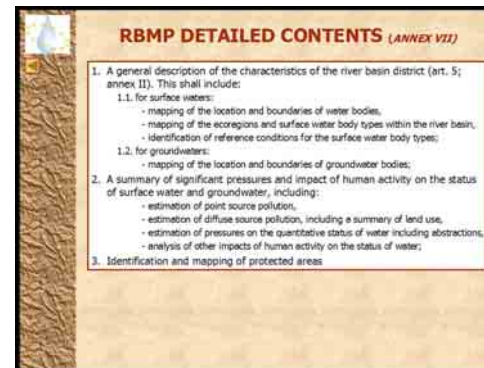


YOUR NOTES

COMMENTS

The Go further section includes Annex VII of the directive, which provides a detailed list of the contents of the plan.

Go further



WP-EcoB07
Go further 2



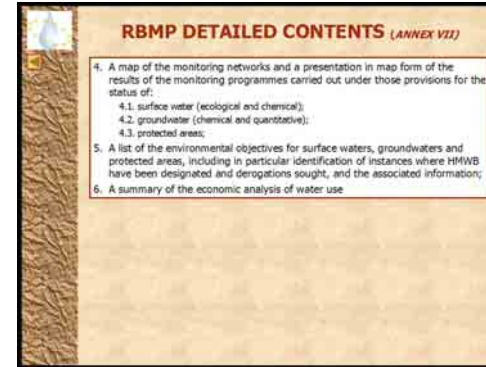
YOUR NOTES

COMMENTS

Key ideas

The Go further section includes Annex VII of the directive, which provides a detailed list of the contents of the plan.

Go further



WP-EcoB07
Go further 3



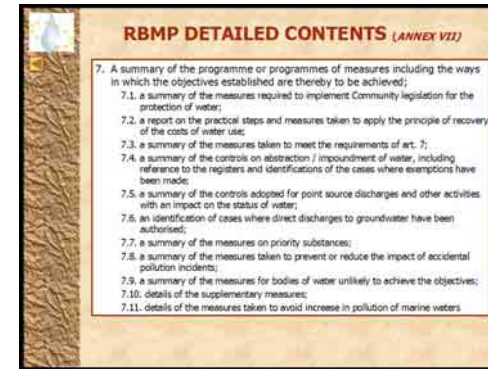
YOUR NOTES

COMMENTS

Key ideas

The Go further section includes Annex VII of the directive, which provides a detailed list of the contents of the plan.

Go further



WP-EcoB07
Go further 4



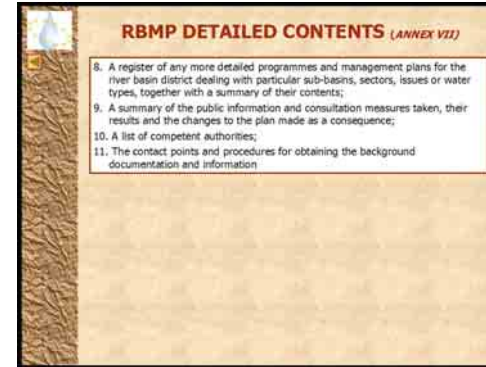
YOUR NOTES

COMMENTS

Key ideas

The Go further section includes Annex VII of the directive, which provides a detailed list of the contents of the plan.

Go further



WP-EcoB07
Go further 5



YOUR NOTES